

SAVANNAH AT TURTLE ROCK

A SUBDIVISION OF PARCEL "C", TURTLE ROCK, UNIT 1, PLAT BOOK 36, PAGES 34, 34A-34T
IN SECTION 25, TOWNSHIP 37 SOUTH, RANGE 18 EAST, SARASOTA COUNTY, FLORIDA

PLAT BOOK 37 PAGE 25C
SHEET 4 OF 4 SHEETS

SARASOTA COUNTY
BENCH MARK 120-C

BOUNDARY LINE CURVE TABLE						
NO.	RADIUS	DELTA	ARC	TANGENT	CHORD	CHORD BEARING
1	20.00'	111°37'17"	38.96'	29.44'	33.09'	N.53°43'09"E.
2	25.00'	129°44'59"	56.61'	53.31'	45.27'	S.62°47'00"W.
3	20.00'	49°36'03"	17.31'	9.24'	16.78'	S.77°08'32"E.
4	4.50'	111°56'05"	8.79'	6.66'	7.46'	S.75°44'34"E.
5	215.00'	35°01'30"	131.43'	67.84'	129.39'	S.65°48'08"W.
6	205.00'	16°17'39"	58.30'	29.35'	58.10'	S.29°16'28"E.
7	60.00'	27°10'06"	28.45'	14.50'	28.18'	N.23°50'14"W.
8	36.00'	25°43'36"	16.16'	8.22'	16.03'	S.23°06'59"E.
9	30.00'	40°22'39"	21.14'	11.03'	20.71'	S.32°22'23"W.
10	65.00'	33°27'41"	37.96'	19.54'	37.42'	N.28°54'53"E.
11	520.00'	05°35'59"	50.82'	25.43'	50.80'	N.41°33'17"W.

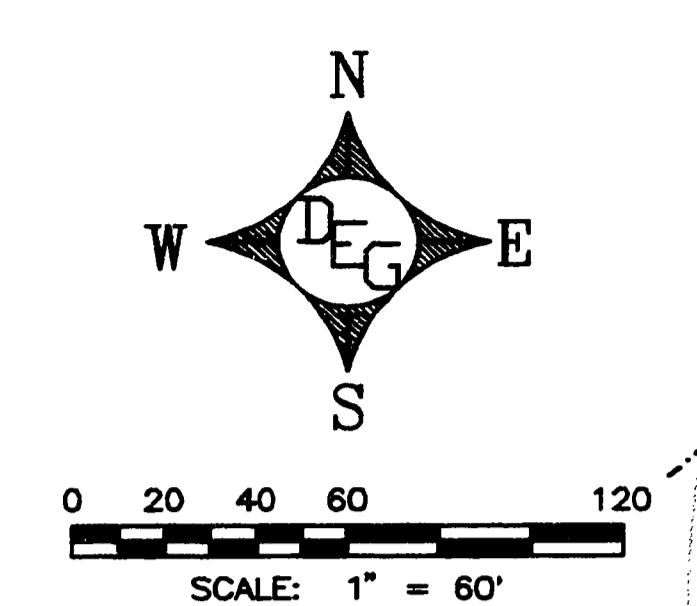
CENTERLINE CURVE TABLE						
NO.	RADIUS	DELTA	ARC	TANGENT	CHORD	CHORD BEARING
12	400.00'	30°35'55"	213.62'	109.42'	211.09'	N.02°35'48"W.
13	213.00'	97°33'04"	362.65'	243.10'	320.41'	S.30°52'47"W.
14	275.00'	43°20'23"	208.02'	109.27'	203.09'	N.78°40'30"W.
15	500.00'	32°05'15"	280.02'	143.79'	276.37'	N.40°57'41"W.
16	130.00'	50°14'49"	114.01'	60.96'	110.39'	N.10°51'23"W.
17	100.00'	83°41'09"	146.06'	89.55'	133.42'	N.77°49'22"W.
18	400.00'	26°10'28"	182.73'	92.99'	181.15'	N.73°25'18"E.

LOT LINE CURVE TABLE						
NO.	RADIUS	DELTA	ARC	TANGENT	CHORD	CHORD BEARING
38	45.00'	13°02'44"	10.25'	5.15'	10.22'	S.18°09'37"E.
39	145.00'	17°26'46"	44.15'	22.25'	43.98'	N.15°57'36"E.
40	420.00'	07°08'13"	52.32'	26.19'	52.28'	N.05°57'50"W.
41	145.00'	20°41'24"	52.36'	26.47'	52.08'	N.03°06'29"W.
42	420.00'	07°17'26"	53.44'	26.76'	53.41'	N.13°10'39"W.
43	145.00'	08°33'45"	52.36'	26.47'	52.08'	N.03°06'29"W.
44	55.00'	56°33'12"	54.29'	29.59'	52.11'	N.50°17'31"W.
45	420.00'	01°04'23"	7.87'	3.93'	7.87'	N.17°21'34"W.
46	193.00'	13°29'37"	45.45'	22.83'	45.35'	S.11°08'57"E.
47	30.00'	81°27'06"	42.65'	25.83'	39.15'	S.37°50'34"E.
48	68.00'	07°21'35"	8.73'	4.37'	8.73'	S.06°33'47"W.
49	193.00'	26°09'26"	88.11'	44.84'	87.35'	S.08°40'35"W.
50	68.00'	34°21'27"	40.78'	21.02'	40.17'	S.27°25'18"W.
51	193.00'	30°26'19"	102.53'	52.51'	101.33'	S.36°58'27"W.
52	68.00'	25°11'42"	29.90'	15.20'	29.66'	S.57°11'53"W.
53	33.00'	24°31'08"	14.12'	7.17'	14.01'	S.82°03'18"W.
54	193.00'	27°27'42"	92.50'	47.16'	91.62'	S.65°55'27"W.
55	33.00'	75°38'05"	43.56'	25.61'	40.47'	N.47°52'05"W.
56	37.00'	64°27'31"	41.63'	23.33'	39.46'	S.42°16'48"E.
57	255.00'	07°16'04"	32.35'	16.19'	32.32'	S.83°17'21"W.
58	37.00'	46°54'05"	30.29'	16.05'	29.45'	N.82°02'24"E.
59	255.00'	20°04'23"	89.34'	45.13'	88.88'	N.83°02'26"W.
60	37.00'	24°25'19"	15.77'	8.01'	15.65'	N.46°22'42"E.
61	27.00'	89°51'47"	42.35'	26.94'	38.14'	S.79°05'55"W.
62	18.00'	159°59'34"	50.26'	102.04'	35.45'	N.44°02'02"E.
63	16.00'	117°50'56"	32.91'	26.55'	27.41'	S.22°57'43"W.
64	255.00'	15°59'56"	71.20'	35.84'	70.97'	N.65°00'16"W.
65	480.00'	01°19'59"	11.17'	5.58'	11.17'	N.56°20'19"W.
66	520.00'	08°29'29"	77.07'	38.60'	77.00'	N.48°36'01"W.
67	150.00'	04°14'12"	11.09'	5.55'	11.09'	N.12°08'56"E.
68	150.00'	16°26'14"	43.03'	21.67'	42.89'	N.01°48'42"E.
69	150.00'	16°08'26"	42.26'	21.27'	42.12'	N.14°28'38"W.
70	150.00'	13°25'57"	35.17'	17.66'	35.09'	N.29°15'49"W.
71	60.00'	08°45'08"	9.17'	4.59'	9.16'	N.14°37'45"W.
72	60.00'	18°24'58"	19.29'	9.73'	19.20'	N.28°12'48"W.
73	205.00'	00°53'09"	3.17'	1.58'	3.17'	S.36°58'43"E.
74	120.00'	07°20'34"	15.38'	7.70'	15.37'	N.39°39'04"W.
75	205.00'	15°24'30"	55.13'	27.73'	54.96'	S.28°49'53"E.
76	120.00'	24°29'11"	51.28'	26.04'	50.90'	N.55°33'57"W.
77	15.00'	66°15'05"	17.34'	9.79'	16.39'	S.18°07'10"E.
78	120.00'	15°48'44"	33.12'	16.66'	33.01'	N.75°42'54"W.
79	215.00'	06°29'54"	24.38'	12.21'	24.37'	S.80°03'57"W.
80	120.00'	19°12'58"	40.25'	20.31'	40.06'	S.86°46'15"W.
81	215.00'	14°00'26"	52.56'	26.41'	52.43'	S.69°48'47"W.
82	120.00'	16°49'41"	35.24'	17.75'	35.12'	S.68°44'55"W.
83	380.00'	02°42'02"	17.91'	8.96'	17.91'	N.61°41'05"E.
84	215.00'	14°31'10"	54.48'	27.39'	54.34'	S.55°32'58"W.
85	380.00'	07°11'23"	47.68'	23.87'	47.65'	N.66°37'47"E.
86	20.00'	19°56'36"	6.96'	3.52'	6.93'	N.88°01'44"E.
87	380.00'	09°48'39"	64.85'	32.50'	64.77'	N.75°06'48"E.
88	45.00'	07°20'17"	5.76'	2.89'	5.76'	N.62°05'00"W.
89	20.00'	29°39'27"	10.35'	5.29'	10.24'	S.67°10'14"E.
90	45.00'	11°25'21"	88.74'	67.97'	75.04'	S.57°45'11"W.
91	348.00'	11°14'44"	68.30'	34.26'	68.19'	S.53°53'46"W.
92	45.00'	92°50'10"	72.91'	47.28'	65.20'	S.45°09'34"E.
93	348.00'	13°27'56"	81.79'	41.08'	81.60'	S.66°15'06"W.
94	45.00'	51°48'41"	40.69'	21.86'	39.32'	N.62°31'00"E.
95	45.00'	14°15'17"	11.20'	5.63'	11.17'	N.79°29'01"E.
96	420.00'	02°53'27"	21.19'	10.60'	21.19'	N.76°55'29"E.
97	420.00'	07°14'22"	53.07'	26.57'	53.03'	N.71°51'35"E.
98	420.00'	07°54'19"	57.95'	29.02'	57.90'	N.64°17'14"E.
99	80.00'	37°55'47"	52.96'	27.49'	52.00'	S.79°17'58"W.
100	80.00'	45°45'22"	63.89'	33.76'	62.20'	N.58°51'28"W.
101	110.00'	46°26'21"	89.16'	47.19'	86.74'	N.12°45'37"W.
102	110.00'	03°48'28"	7.31'	3.66'	7.31'	N.12°21'48"E.
103	295.00'	16°33'51"	85.28'	42.94'	84.99'	N.75°04'37"W.
104	295.00'	11°03'49"	56.96'	28.57'	56.87'	N.88°53'27"W.
105	295.00'	05°55'20"	30.49'	15.26'	30.48'	S.82°36'59"W.
106	233.00'	06°40'15"	27.13'	13.58'	27.11'	S.76°19'11"W.
107	348.00'	12°21'20"	75.04'	37.67'	74.90'	S.66°48'24"W.
108	233.00'	12°21'20"	50.25'	25.22'	50.15'	S.66°48'24"W.
109	348.00'	12°21'20"	75.04'	37.67'	74.90'	S.66°48'24"W.
110	233.00'	12°21'20"	50.25'	25.22'	50.15'	S.66°48'24"W.

RIGHT OF WAY LINE CURVE TABLE						
NO.	RADIUS	DELTA	ARC	TANGENT	CHORD	CHORD BEARING
19	380.00'	30°35'55"	202.94'	103.95'	200.54'	N.02°35'48"W.
20	233.00'	97°33'04"	396.70'	265.92'	350.49'	S.30°52'47"W.
21	295.00'	33°33'00"	172.74'	88.93'	170.28'	N.83°34'12"W.
22	25.00'	98°56'16"	43.17'	29.24'	38.00'	N.63°44'10"E.
23	110.00'	50°14'49"	96.47'	51.58'	93.41'	N.10°51'23"W.
24	80.00'	83°41'09"	116.85'	71.64'	106.73'	N.77°49'22"W.
25	420.00'	18°02'09"	132.21'	66.66'	131.66'	N.69°21'09"E.
26	25.00'	56°00'51"	24.44'	13.30'	23.48'	S.50°21'48"W.
27	45.00'	279°13'47"	219.31'	—	58.31'	S.18°01'44"E.
28	25.00'	41°35'01"	18.14'	9.49'	17.75'	S.79°12'21"E.
29	380.00'	19°40'04"	130.44'	65.87'	129.80'	N.70°10'06"E.
30	120.00'	83°41'09"	175.27'	107.45'	160.10'	N.77°49'22"W.
31	150.00'	50°14'49"	131.55'	70.34'	127.37'	N.10°51'23"W.
32	25.00'	67°06'47"	29.28'	16.58'	27.64'	S.19°17'22"E.
33	520.00'	23°11'32"	210.49'	106.70'	209.05'	N.41°14'59"W.
34	480.00'	32°05'15"	268.82'	138.03'	265.32'	N.40°57'41"W.
35	255.00'	43°20'23"	192.89'	101.32'	188.32'	N.78°40'30"W.
36	193.00'	97°33'04"	328.60'	220.27'	290.32'	S.30°52'47"W.
37	420.00'	30°35'55"	224.30'	114.89'	221.64'	N.02°35'48"W.

TRACT LINE CURVE TABLE						
NO.	RADIUS	DELTA	ARC	TANGENT	CHORD	CHORD BEARING
111	233.00'	66°10'09"	269.08'	151.80'	254.38'	S.15°11'19"W.
112	10.00'	98°06'03"	17.12'	11.52'	15.11'	S.61°49'00"W.
113	15.00'	145°48'53"	38.17'	48.78'	28.67'	N.85°40'25"E.
114	55.00'	76°41'41"	73.62'	43.51'	68.25'	N.59°45'59"W.
115	480.00'	18°32'05"	155.28'	78.32'	154.60'	N.48°24'17"W.
116	37.00'	135°46'55"	87.68'	91.08'	68.56'	S.75°56'30"E.
117	33.00'	100°09'14"	57.68'	39.44'	50.62'	N.60°07'40"W.
118	68.00'	66°54'44"	79.41'	44.93'	74.98'	S.36°20'21"W.
119	145.00'	46°41'54"	118.18'	62.59'	114.94'	N.01°20'02"E.
120	45.00'	42°32'28"	33.41'	17.52'	32.65'	S.03°24'45"W.

- NOTES:
- BEARINGS SHOWN HEREON REFER TO AN ASSUMED BEARING FOR THE EASTERLY LINE OF THE S.E. 1/4 OF SECTION 23, TOWNSHIP 37 SOUTH, RANGE 18 EAST BEING S.00°24'02"E.
 - NOTICE: THERE MAY BE ADDITIONAL RESTRICTIONS THAT ARE NOT RECORDED ON THIS PLAT AND THAT MAY BE FOUND IN THE PUBLIC RECORDS OF THIS COUNTY.
 - BENCH MARK ELEVATIONS ARE RELATIVE TO THE NATIONAL GEODETIC VERTICAL DATUM (NGVD) OF 1929 BASED ON U.S.C. & G.S. BENCH MARK NO. 252 1965, BRASS DISC IN CONCRETE AT THE N.W. CORNER OF CENTRAL SARASOTA PARKWAY AND SEMINOLE GULF RAILWAY WITH A PUBLISHED ELEVATION OF 17.474.

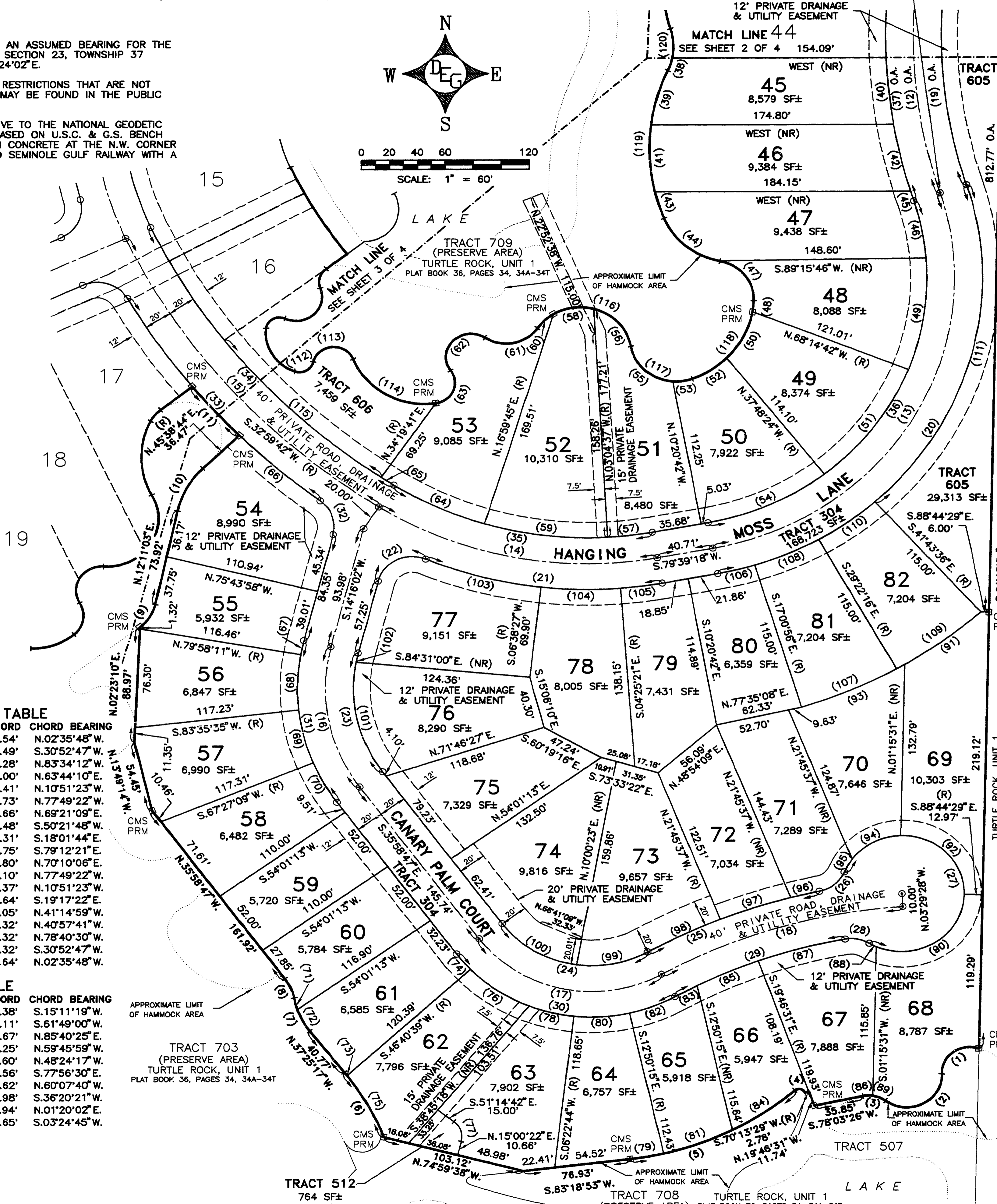


RECORDED IN OFFICIAL RECORDS
95 JUN -7 PM 12:29

MARSHALL RUSHING
SARASOTA COUNTY, FL

- LEGEND
- CMF = CONC. MONUMENT FOUND
 - CMS = CONC. MONUMENT SET NO. 1747
 - IRS = IRON ROD SET NO. 1747
 - BLOCK LINE AT P.L., P.C., P.T., P.R.C., P.C.C.
 - IRF = IRON ROD FOUND
 - FIP = FOUND IRON PIPE
 - P.K. = P.K. NAIL SET PCP
 - CENTERLINE AT P.L., P.C., P.T., P.R.C., P.C.C.
 - P.K. = P.K. NAIL FOUND
 - PCP = PERMANENT CONTROL POINT
 - PRM = PERMANENT REFERENCE MONUMENT
 - (R) = RADIAL LINE
 - (NR) = NONRADIAL LINE
 - (F) = FIELD MEASUREMENT
 - (P) = RECORD PLAT INFORMATION
 - PC = POINT OF CURVATURE
 - PT = POINT OF TANGENCY
 - PRC = POINT OF REVERSE CURVE
 - RCC = POINT OF COMPOUND CURVE
 - PI = POINT OF INTERSECTION
 - SF = SQUARE FEET
 - O.A. = OVER ALL

DARRELL E. GERKEN
PROFESSIONAL LAND SURVEYOR
5730-A JASON LEE PLACE SARASOTA, FLORIDA 34233
(813) 924-7465 922-3846 (FAX)



v GF